



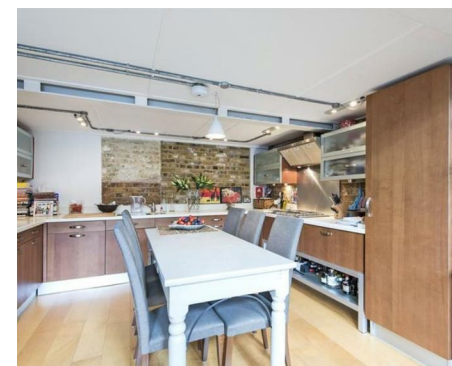
NEWINGTON
LONDON

2 Bedrooms

Apartment

Located in London

£1,300 Per Month



info@newingtonstates.com

<http://www.newingtonstates.com>

020 7724 2233



NEWINGTON LONDON

60 Upper Montagu Street

London

W1H 1SN

020 7724 2233

info@newingtonstates.com

This stunning two bedroom, two bathroom apartment located on the fourth floor of a popular purpose built block within easy reach of both St John's Wood and Maida Vale. This stunning apartment has been recently refurbished to an exceptional standard and offers a large living space, comprising of a spacious reception room offering very high ceilings, allowing lots of sunlight into the property throughout the day. Further benefits include 24 hour porterage & lift access.

The property itself is only moments away from Warwick Avenue on the Bakerloo line and also conveniently located close to the St Johns Wood tube station on the Jubilee line. The property is also situated close to the shops of Little Venice, the famous Lords Cricket Ground and the American School. EPC RATING: B

Energy Efficiency Rating:

Agents Note: Whilst every care has been taken to prepare these particulars, they are for guidance purposes only. All measurements are approximate and are for general guidance purposes only and whilst every care has been taken to ensure their accuracy, they should not be relied upon and potential buyers/tenants are advised to recheck the measurements.

<http://www.newingtonstates.com>